

# Veeam Configurator

for VMware Infrastructure

## Get control, keep control

**Discover, manage and enforce your ESX servers' configuration from a single interface**

Setting up and properly configuring your ESX servers isn't difficult. But over time, things can change. For example, ESX storage configuration is prone to constant changes. How do you know which ESX servers are still configured as intended, and which have "drifted"? The solution is Veeam Configurator, an easy-to-deploy solution designed to meet the day-to-day ESX server configuration and change management needs of VMware administrators.

Veeam Configurator helps to ensure that your ESX server configuration complies with corporate policies and standards across your entire VMware Virtual Infrastructure 3 (VI3), simplifying management and dramatically increasing the security, predictability and reliability of your virtual infrastructure.

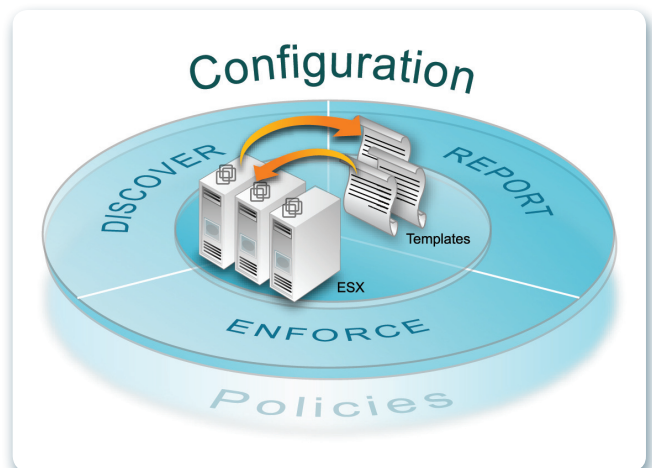
### Simplified configuration management

With Veeam Configurator, you can quickly and easily discover the current settings for all your ESX hosts, review and adjust these settings as needed, and use that information to define your baseline configuration templates. These templates can then be applied to groups of ESX servers simultaneously, allowing you to centrally manage the configuration of all your ESX servers. At any time, you can run the Configurator scan again, and receive detailed reports of exactly which ESX servers match the templates, which do not, and where the differences lie.

### Change and compliance reporting

Veeam Configurator offers configuration template settings reports, as well as configuration difference reports comparing various ESX servers. These reports are generated in Veeam's VMR format, and can be viewed on any computer with the Veeam Report Viewer and Microsoft Office installed.

## Configuration and Change Management



### Automated discovery and auditing

Veeam Configurator allows you to quickly scan all your ESX servers to find and group servers with matching configuration. Just install the product, and in less than 5 minutes you will get a detailed view of the current configuration of your ESX servers. This data is an ideal starting point for creating your own common configuration templates, saving time vs. building these templates from scratch.

### Change modeling

Veeam Configurator includes a modeling mode, which simulates the application of a template to specific ESX servers, and lets you review and confirm all changes before actually executing them.

### One-click undo

Veeam Configurator keeps the history of all configuration changes made, so any configuration change can be undone in a matter of seconds, with just one mouse click.

### Fits into current change control processes

Thanks to its advanced features, such as reporting, change simulation and one-click undo, Veeam Configurator fits naturally into your corporate change control process. Configurator's reports and simulation capability help you accurately anticipate the effect of configuration changes, and the one-click undo offers extra peace of mind.

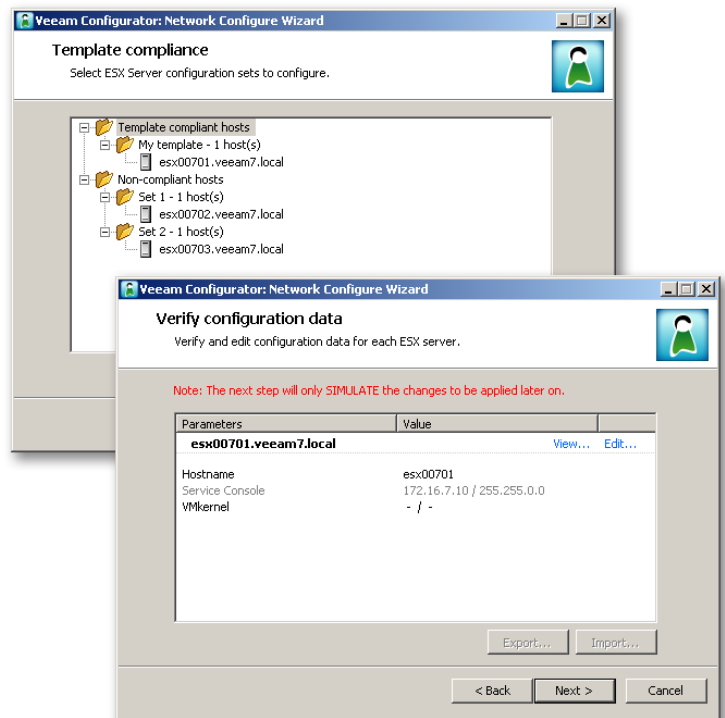
### Integrates with and extends VMware VirtualCenter

Veeam Configurator integrates with and extends the capabilities of VMware VirtualCenter, so you maintain VirtualCenter's centralized view and associated benefits, such as VirtualCenter partitioning to simultaneously configure all ESX Servers in a cluster. Veeam Configurator 2.0 includes support for managing ESX networking settings (such as virtual switches and their functionality mode), DNS and routing settings (such as gateway DNS server IP addresses), and storage settings (including HBA settings and multi-pathing).

### Configuration Experts

Veeam Configurator also comes with five "Experts" that automate additional common ESX server configuration tasks to save you even more time.

- **RootAccess Expert** helps you to enable or disable remote root access.
- **TimeSync Expert** allows you to check, modify and apply the correct NTP configuration for all ESX Servers within your VI3 environment.
- **AddUser Expert** helps you create a user account with shell access on one or multiple ESX hosts simultaneously.
- **ESXDiag Expert** reports on service console configuration, TCP and DNS settings, scheduled services that have failed to launch, NTP settings, and shows the time difference between a public NTP server and the specific ESX host.
- **CustomScript Expert** allows you to run a custom script for every ESX Server in the VI3, or in the specified server group, and consolidate the output into a single view.



### System requirements

- VMware Infrastructure 3:
  - ESX Server 3.x; VirtualCenter 2.x
- Windows XP (SP2 or later), Windows Vista, Windows Server 2003
- Microsoft .NET Framework 2.0 or later
- Microsoft Office (optional)

### Ordering information and Support

For pricing, please contact your Veeam Software reseller or submit a sales inquiry at <http://www.veeam.com/salesinc.asp>.

For technical support please visit <http://www.veeam.com/support.asp> or email [support@veeam.com](mailto:support@veeam.com) and our support representative will contact you promptly.

U.S. Headquarters  
 6479 Reflections Drive,  
 Suite 200  
 Columbus, Ohio 43017

Phone: +1-614-339-8200  
 Fax: +1-614-675-9494

EMEA Headquarters  
 Quatro House  
 Lyon Way, Frimley Road  
 Camberley, UK, GU16 7ER

Phone: +44 (0) 1276-804-501  
 Fax: +44-208-181-7555